

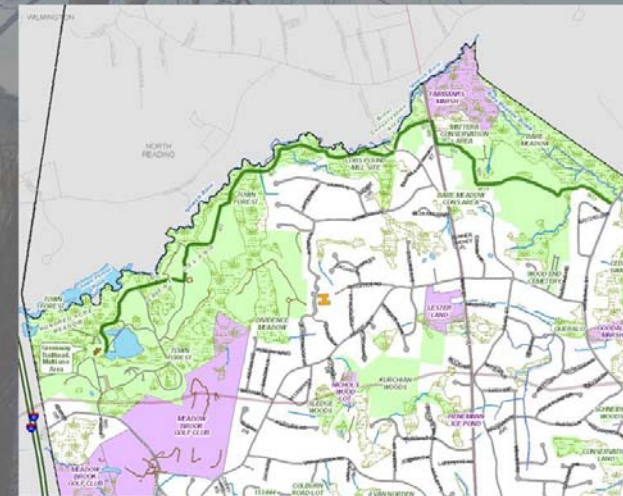
# Ipswich River Greenway Proposal

## Northern Area Greenway Task Force

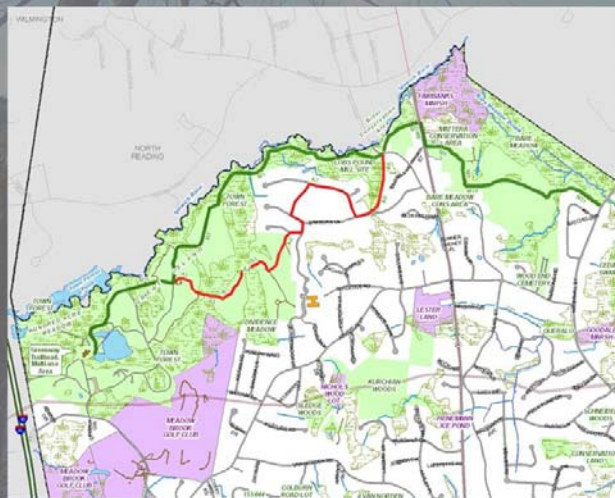
Final Report

December 11, 2007

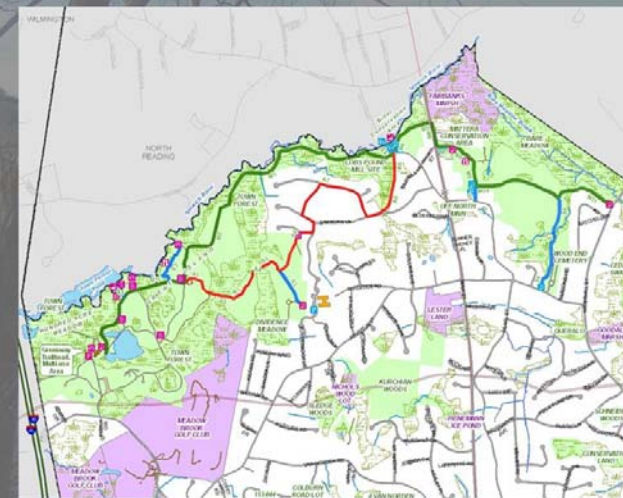
### Main Route



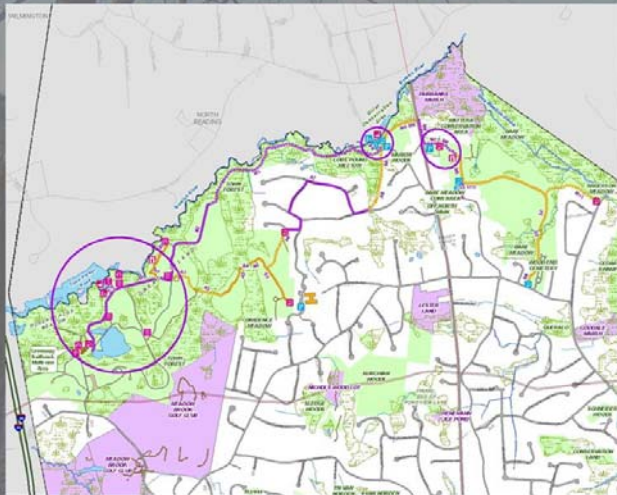
### Alternative Route



### Spurs & Amenities

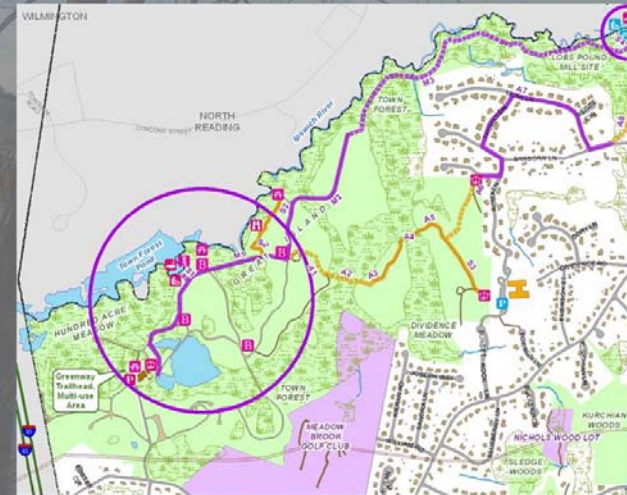


## Accessible Trails



## Accessible Trails & Amenities

Town Forest



## Accessible Trails



## Trail Improvements

Town Forest Trailhead



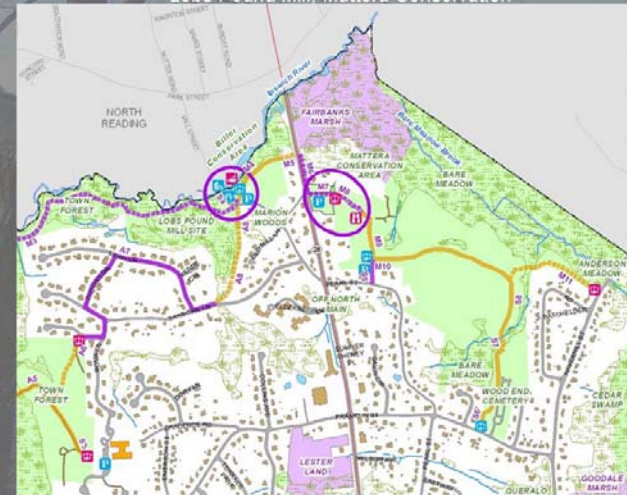
## Trail Improvements

Town Forest Kayak Launch/Pier



## Accessible Trails & Amenities

Lobs Pound Mill, Mattera Conservation



## Trail Improvements

Ipswich River Greenway Boardwalk - Town Forest to Mill St



## Trail Improvements

Lobs Pound Mill



## Trail Improvements

Mattera Conservation Area – Trail to Bare Meadow



## Trail Improvements

Bare Meadow Viewing Platform



## Trail Improvements

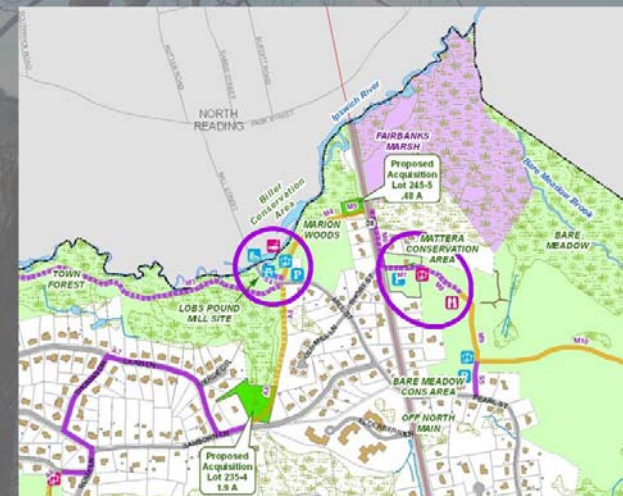
### Other Projects

- Lynn Village Way to Town Forest trail (Zone A5-A6)
- Haverhill St. to Bare Meadow trail (Zone M10-M11)
- Great Island Boardwalk (A2)
- Marion Woods Trail (M4-M5)



Great Island Boardwalk

## Proposed Acquisitions



## Trail Organization



•Sign Standardization



•Trail Maps



- Trail Assessment
- Trail Maintenance
- Adopt-A-Trail
- Kiosks

## Trail Assessments

### SAMPLE TRAIL ASSESSMENT FORM

**Trail Name:** Rocky Hollow Trail

**Trail Section** (on Ipswich River Greenway Proposed Route map): AB

**Trail Description:** Trailhead is on Lyns Village Way, on left before the first house. Trail follows an old wood road for 100 yards, then leaves wood road and turns right or west and downhill through a stone and boulder strewn forest. Look for Rattlesnake Plantain here. It then crosses an intermittent stream and rises again to meet the existing Cranberry Dam Trail. Trail has been flagged, but doesn't exist past the wood road.

**Work Needed:** Needs signs at both ends and where it diverges from the woods road. Trail needs to be built from the woods road to the Cranberry Dam trail including 60 ft of boardwalk over the stream.

**Skill Level** (professional, adult/skilled, or youth led): Youth and Adult/skilled.

**Grant Candidate?** Not necessary.

**Time Estimate:** 100 hours

**Cost Estimate:** \$1120 for boardwalk materials

**Use** (walk, bike, XC ski, wheelchair): Walk or XC ski

**Accessibility:** Not suitable for wheelchair accessibility due to slope and numerous rocks.

**Priority** (high, low): Important link for alternate route of Greenway as well as access to Town Forest for Sanborn Lane development.

**Permitting:** Wetlands permit for stream crossing from Cons Com, as well as permission from Town Forest Committee.

**Maintenance Plan:** Annual check.

## Funding

- Grants
- Volunteer Work
- Town Funding
  - Staff
  - Town match
  - CPA
  - Maintenance plan

## Summary

