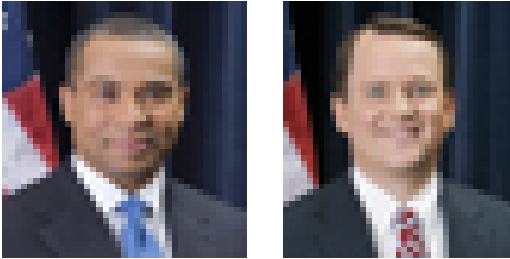


GOVERNOR and LT. GOVERNOR:



Governor Deval L. Patrick
Lieutenant Governor Tim Murray
State House Room 360
Boston, MA 02133
(617) 725-4005
FAX (617) 727-9725

Party Affiliation – Democrat

Governor's Council
Sixth District

Councilor Michael J. Callahan
State House
Boston, MA 02133
(617) 725-4015
(781) 710-1414 (cell)

Party Affiliation - Democrat

STATE:

MIDDLESEX and ESSEX SENATORIAL DISTRICT



Senator Richard R. Tisei
State House Room 308
Boston, MA 02133
(617) 722-1206
FAX (617) 722-1063

979 Main Street
Wakefield, MA 01880
(781) 246-3660
FAX (781) 246-2873
E-mail: Richard.Tisei@state.ma.us

Party Affiliation - Republican

REP - 20th MIDDLESEX DISTRICT
Precincts 1, 4, 6, 7, and 8



Representative Bradley H. Jones, Jr.

State House Room 124
Boston, MA 02133
(617) 722-2100
FAX (617) 722-2390
E-mail: Bradley.Jones@state.ma.us

Home Residence
(978) 664-5936

Party Affiliation – Republican

REP - 30th MIDDLESEX DISTRICT
Precincts 2, 3, and 5



Representative James J. Dwyer
State House Room 39
Boston, MA 02133
617-722-2014
Email: James.J.Dwyer@state.ma.us

Party Affiliation - Democrat

FEDERAL:

SIXTH CONGRESSIONAL DISTRICT



Congressman John F. Tierney
2238 Rayburn House Office Building
Washington, DC 20515
(202) 225-8020
FAX (202) 225-5915

17 Peabody Square
Peabody, MA 01960
(978) 531-1669
FAX (978) 531-1996

Party Affiliation – Democrat

SENATORS:



Edward M. Kennedy
317 Russell Senate Office Building
Washington, DC 20510
(202) 224-4543
FAX (202) 224-2417

2400 J.F.K. Building
Boston, MA 02203
(617) 565-3170
FAX (617)565-3183

Party Affiliation - Democrat



Senator John Kerry
304 Russell Senate Office Building
3rd Floor
Washington, DC 20510
(202) 224-2742
FAX

One Bowdoin Square
10th Floor
Boston, MA 02114
(617) 565- 8519

Party Affiliation - Democrat

TOWN
OF
READING

STATE
and
FEDERAL
Officials

Provided by:

Office of the Town Clerk
Laura A Gemme, Town Clerk
16 Lowell Street
Reading, MA 01867

781-942-9050
(11/2008)