

Reading Bi-Weekly Update

December 15, 2011



e-Cars before!



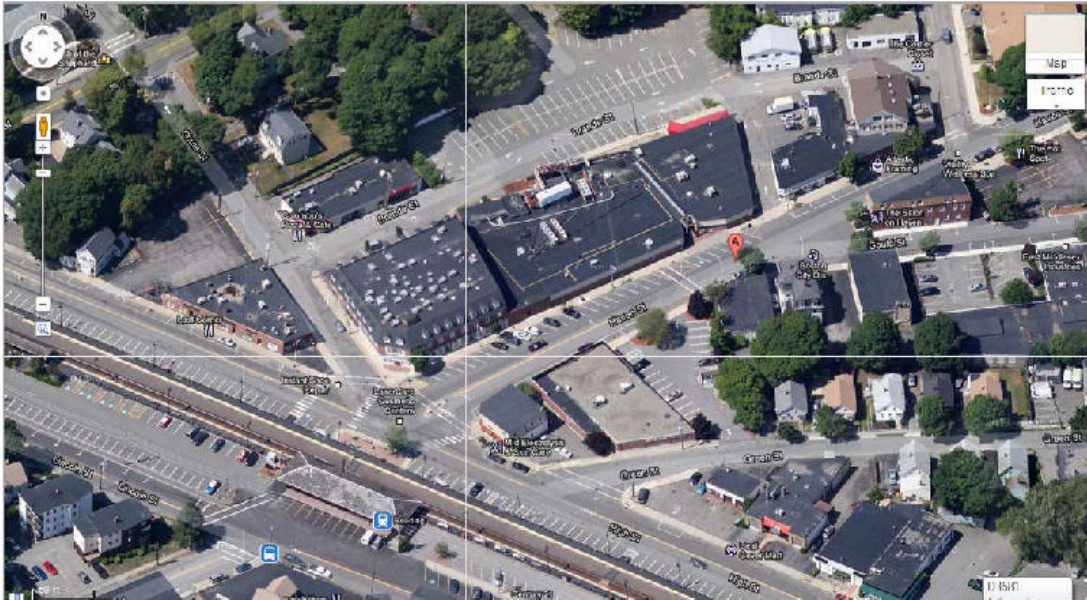
e-Cars after!

Stay tuned for the Grand Opening of eCars located at 281 Main Street.... coming soon!

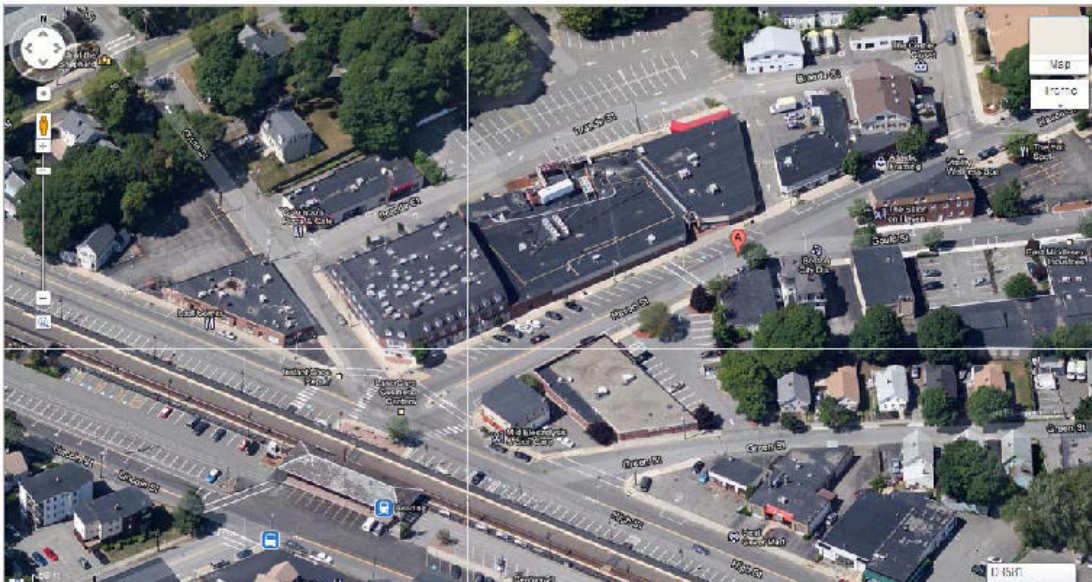
30 Haven Street

- Foundation is complete
- Steel is nearing completion
- Concrete flooring will be done next
- Modular are being delivered from north of Reading and will come down Main Street to Washington Street and then to High and Haven Streets. See Logistics Maps below.
- Police details will be present.
- A limited number of on-street parking spaces will be impacted to accommodate the delivery but we are working hard to restore the parking as quickly as possible after the deliveries have been completed. This is mainly one parking space on Chute Street, 2 permit parking spaces on the South side of Brande Court (adjacent to the parking for 2 Haven) and a hand full of spaces on the North side of Brande Court as indicated on the plan.
- Scheduled to commence mobilization of the modular residential units possibly the week of December 19th. As has been indicated, the contractor will circumvent the Downtown to minimize impact of delivery on traffic and local businesses and will work from the rear of the site for the first phase (Brande Court Parking Lot) so that Haven Street will not be impacted by the set crew. Setting of the modular residential units is anticipated to be imminent; however this will depend on the progress made on the work still remaining to be completed before the modular units can be set into the framing.
- The plan is subject to change if weather or other factors present delay.

Modular Box Traffic Logistics – Brande Court Operation



Modular Box Traffic Logistics – Haven Street Operation



Reading Woods

The following activities are scheduled (weather depending) for the last two weeks of December:

- Blasting for utilities
- Miscellaneous grading throughout the site
- Foundation for Building 9
- Working infrastructure
- Frame Town Home Building “A”
- Underground electrical and plumbing for Building 9
- S & R cleanup debris pile 4 – 6 weeks
- Continue blasting for infrastructure
- Work on drainage for Building 9
- Acquire permit for Building 9
- Finalize permit for Building 9
- Build stair and elevator towers in Building 9
- Complete landscaping around Club House
- Temporary fence at Club House and around Building 9

MF Charles Building

Plans were presented to staff a week ago and to the Historical Commission on December 6 as a courtesy, and to obtain feedback since this building is on the National Register of Historic Places. The Town is working with the applicant to see how two way access from Haven Street into the “upper” Parking Lot can be accommodated (it is currently restricted to exit only).

MWRA Stoneham-Reading Connection

The MWRA will be starting to install the replacement 6” water main (from the State’s yard to the intersection of Main and South Streets. All other pipe work north of Route 128 has been completed. They expect to finish all pipe work this month.

Calareso’s

They are moving along and completing the interior build out and installation of the greenhouse. The Community Planning and Development Commission approved their sign on December 12 and they plan to be open in the early Spring. It won’t be long now!

Next Issue

Due to the upcoming holidays the next issue of the Reading Bi-Weekly Update will be on January 5, 2012.

Questions?

If you have any questions about all the activity going on around town... just ask and we will find you the answer.

To subscribe to this Bi-Weekly Update

Send an email request to mknight@ci.reading.ma.us requesting that you be added to the Bi-Weekly Update list.